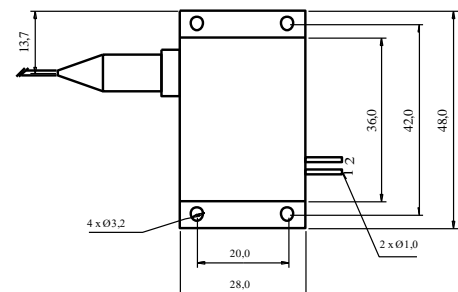
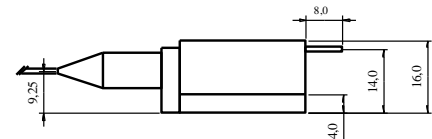
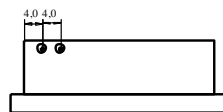


Model		M981±0.5-25-F105/22-T4R		
Optical	Unit	Min	Typical	Max
Output power (exit fiber)*	W		24.0	25.0
Wavelength Peak	nm	980	981	982
Spectral width (FWHM)	nm			0.5
Fiber				
Core diameter	µm	102	105	108
Cladding diameter	µm	122	125	128
Numerical aperture		0.20	0.22	0.24
Length	m	0.9	1.0	2.0
Connector (Optional)	-		SMA905	
Electric*				
Threshold current	A		0.7	
Operating current	A		10.0	11.0
Operating voltage	V		4.62	4.70
Slope efficiency	W/A		2,60	
Power conversion efficiency	%	50.0	51.5	
Accessories				
Thermistor	kΩ		10k@25°C	
Absolute Ratings				
Colling plate temperature	°C		20 – 30	
Operating* humidity	%		< 75	
Storage temperature	°C		-20 – +80	
Soldering temperature	°C		250 (10s)	

* Data specified at 25°C cooling plate.

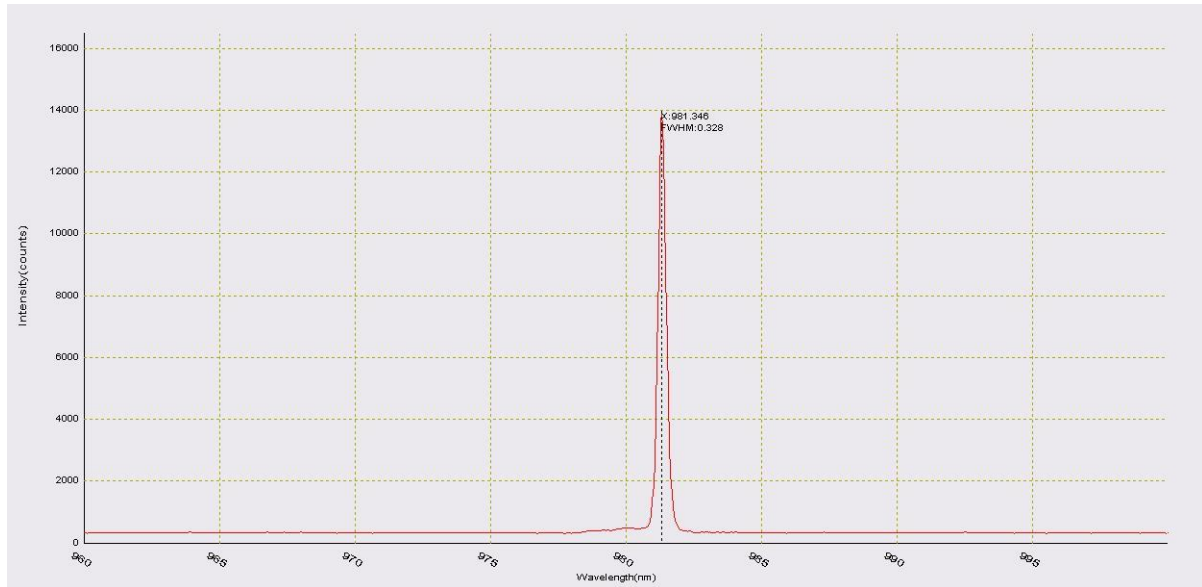


Pinouts	
1	LD Anode
2	LD Cathode

Compliance with Regulatory Requirements: This industrial laser is an OEM version of a laser diode. As such, it is intended only for integration into other equipment. This laser does not comply with IEC and CDRH requirements. The customer is responsible for IEC and CDRH certifications of the system that incorporates this industrial laser.



Spectrum



P-I curve

